

VitalCheck

Doctors In Your Office

INTRODUCING VITALCHECK:

Get your vitals checked with VitalCheck. The highest quality preventive care provided right in your office or virtually.





BlackRock



WARNER MUSIC GROUP



**SOCIETE
GENERALE**

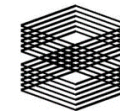


WACHTELL
LIPTON
ROSEN &
KATZ



NOMURA

FORDHAM
THE JESUIT UNIVERSITY OF NEW YORK



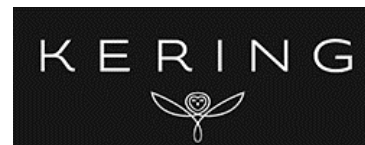
TISHMAN SPEYER

XPO
Logistics

CRAVATH, SWAINE & MOORE LLP



**PRINCETON
UNIVERSITY**



WebMD[®]



How our Services Work:

- ❖ We set-up temporary On-site Clinics (using conference rooms or cafeterias) for large Employers and Insurance Companies
- ❖ We contract only with local licensed professionals
- ❖ We provide all required instrumentation and supplies to the employer's worksite
- ❖ We utilize our proprietary digital platform to schedule, track, coordinate care, report, validate eligibility as well as claims processing
- ❖ Our digital platform allows for easy integration into most EMR and Insurance platforms
- ❖ We have a robust IT virtual backroom to assist with connectivity and data mining
- ❖ We employ best practices in care and have created a virtual network of all specialties to provide holistic and preventative care

*** Early education and intervention are key building blocks in changing the Paradigm of Healthcare*



Doctor pop ups a clinic in your worksite to provide your free annual checkup

Ongoing follow-up for:

- ❖ Weight management
- ❖ Hypertension
- ❖ Smoking cessation
- ❖ Referrals into disease management / specialists
- Bariatric Medicine
- Diabetes Management
- Cardiology etc.

Popup Worksite Clinics





Scope of Services:

- ❖ On-Site Primary Care - preventive and acute care
- ❖ Virtual Office and Wellness Visits
- ❖ Coordination of Care with multi-specialty health systems
- ❖ Health Management
 - Addressing Social Determinants of Health
 - Addressing Behavioral Health Issues
- ❖ Digital Interface and integration
- ❖ COVID Screening, testing, tracking and Vaccination
- ❖ Value-Based Contracting Options



Serving clients nationwide

We serve a diverse group of clients of all sizes from different industries across the United States, including financial institutions, education institutions, industrial companies, sports organizations, law firms and others.

WE HAVE SERVED OVER

700

Organizations / Companies

Q1 2019 to Q1 2020

220% Growth

in patient encounters

2022

295% Growth

in patient encounters

WE HAVE SERVED OVER

150,000

Patients / Employees



Real data collect from a self funded client, 52 days on site, saw 535 patients

Doctors in your Office: Medical Report for Company, 5/21/19 -3/15/22

Doctors in your Office: Medical Report for Company, 5/21/19 -3/15/22

Estimated 3 year cost savings (for common conditions only) associated with referring patients to PCPs / specialists and educating patients on appropriate preventive care: \$2.06M - \$22.84M

Selected Common Concerning Medical Findings:

Diagnosis	#Patient	Estimated Cost Savings (3-year estimates at lowest end of range)
Kidney Disease	13	\$296,400.00 - \$1,014,000.00 (concerning for failure, dialysis, transplant)
Liver Disease	47	\$320,803.20 - \$4,935,000.00 (concerning for cirrhosis, failure)
Hypertension	31	\$91,140.00 - \$6,510,000.00 (concerning for stroke / heart attack)
Diabetes	08	\$192,000.00 (accelerated atherosclerosis, kidney disease, blindness)
Pre-diabetes	40	\$360,000.00 (concerning for decline to diabetes)
Alcohol Misuse	92	\$627,955.20 - \$9,660,000.00 (liver damage / lost work productivity)
Depression	21	\$63,000.00 (mortality risks / lost work productivity)
Cigarette Smoking	11	\$107,797.80 (concern for coronary artery disease, stroke, cancer)

Onsite Doctor event the 20th of October 2021 at Fuji Electric in Edison, NJ

13 Onsite Checkups Performed by Dr. Tartacoff of Holy Name generating:

- ❖ Approx. \$2,300 in professional services fees
- ❖ Approx. \$500 in labwork fees
- ❖ Approx. \$12,000 in revenue for 4 referrals into Colonoscopy
- ❖ Approx. \$3,000 in revenue for 1 referral into Endoscopy
- ❖ 1 x referral into OBGYN
- ❖ 4 x referrals into primary care / family medicine

Total value of onsite checkups and immediate system referrals: \$17,800

- ❖ Cost for the doctor's time: \$950
- ❖ Fees to VitalCheck: \$950
- ❖ Net Revenue from the day: \$15,950



Magic Suitcase

- ❖ Automatically delivered to worksite by proprietary logistics platform.
- ❖ Contains all equipment needed by physician to conduct wellness checkups.
- ❖ Hotspot-enabled E-ink label on suitcase is updated electronically with Fedex Label, picked up and forwarded to the next worksite location or VitalCheck's logistics center for replenishment.
- ❖ Logistics platform automatically orders the suitcase to be picked up and notifies the employer group via email / SMS to ensure suitcase is ready for courier pickup.

